

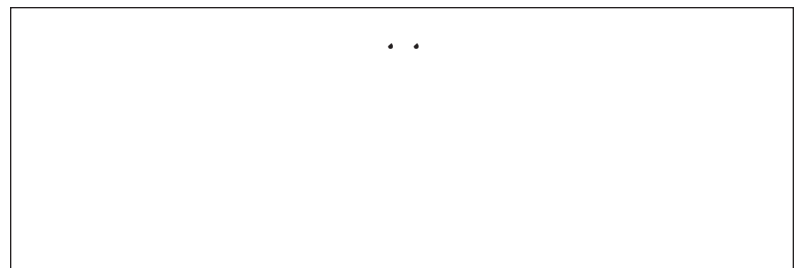
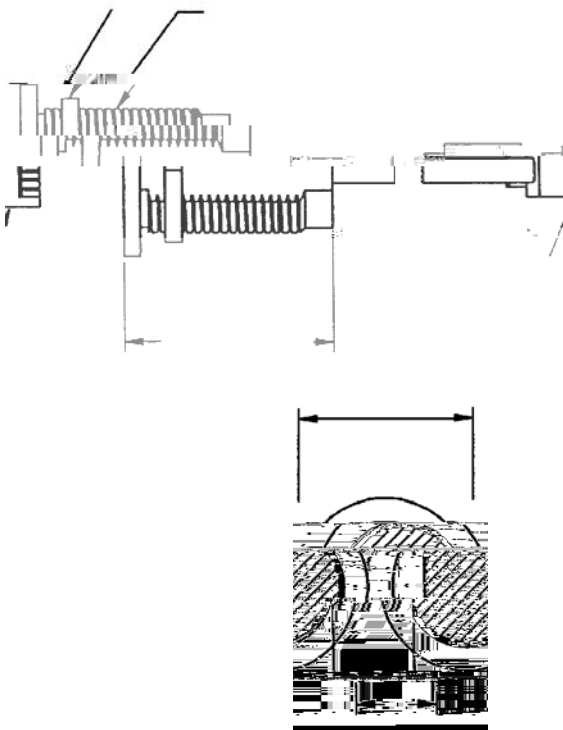
# MICROPlumb® PRODUCTS Push Button

# MCR 231-DMC



- ▶ **Description**  
Waterproof push button for use with any MICROPlumb® Controller. Used on Acorn® and Willoughby® fixtures with “D” shaped hole. May be used to activate Flushometer, lavatory and shower solenoids.
- ▶ **Specifications**
  - 35 VDC Maximum
  - 0.20 AMP Maximum
  - Stainless Steel Housing
  - .875-14 Thread – Major Diameter .8631/.8734
  - 15' Cord w/6 Position, 4 Connector RJ-11 Modular Plug
- ▶ **Accessories**
  - ETF 1003-72      6' Extension Cord Kit
  - ETF 1003-108    9' Extension Cord Kit
  - ETF 1003-240    20' Extension Cord Kit

NOTE: The MCR 231-D Push Button cord can be extended to a maximum length of 200' using the above extension cord kits.



The information contained in this document is subject to change without notice.

