

## About Sensing Edges...

The Hangar Door Sensing Edge is a pressure sensitive electric edge which is custom manufactured to your exact specifications for length, width, height and sensitivity. When touched lightly the edge will send an immediate electrical signal to your controls to stop, and/or reverse operations.

It is completely flexible and will contour curved surfaces. The Sensing Edge is extruded 22 gauge - 4 Pin Micro Connector

**Wire Outlet Location:** per customer specifications

**Electrical Requirements:** 24 volts, 1/2 amp  
AC or DC power

**Electrical Diagram:** 4-wire, N.O. configuration

**Electrical Contact Element:** Alumaglas

### Standard Specifications

®

**Cover:** Heavy duty reinforced PVC

**Temperature Range:** -30° F to +155° F

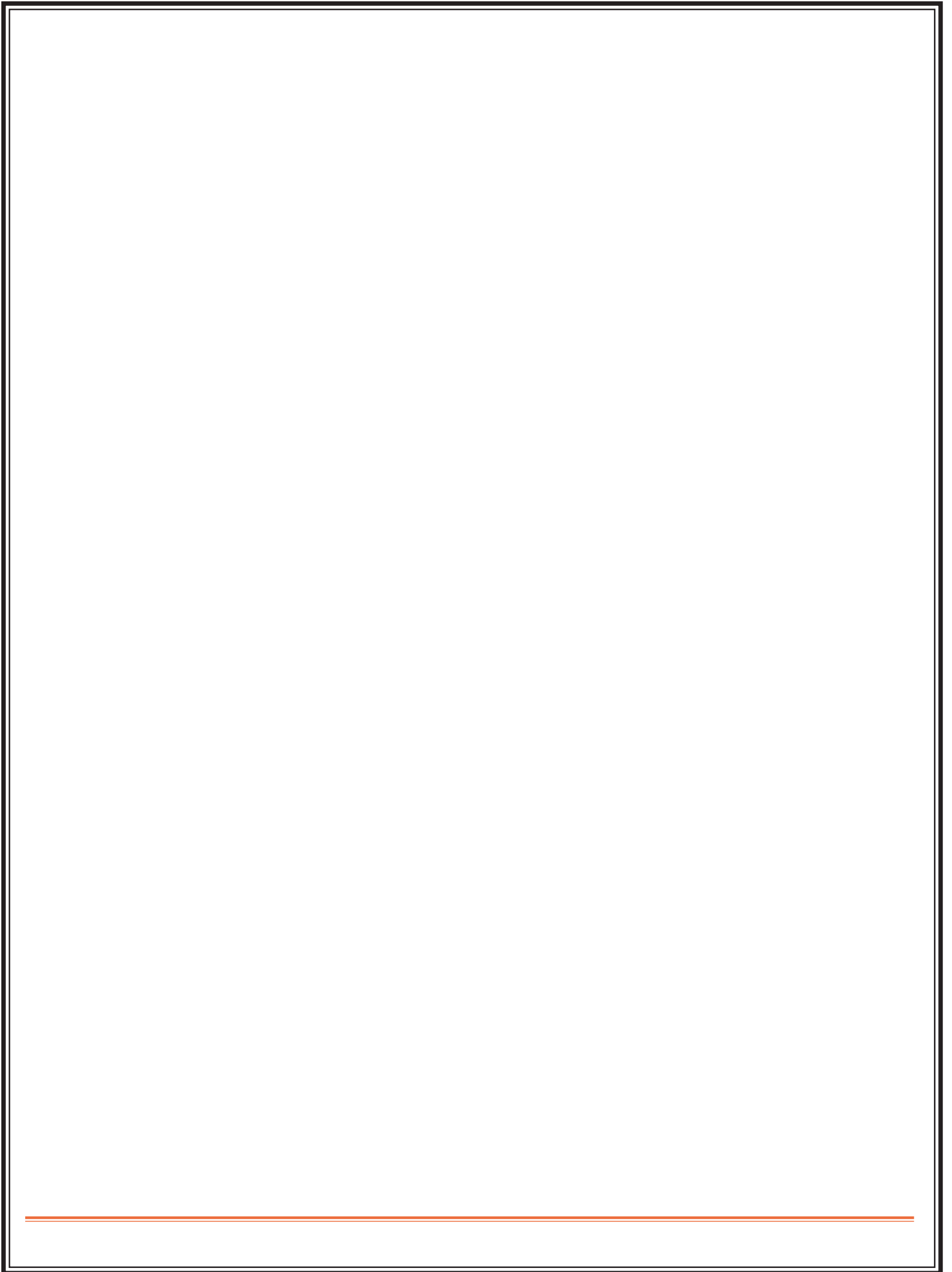
**Mounting:** Double sided tape for easy alignment

### Options

- 2-wire N.O. configuration
- 4-wire control reliable safety controller (RT-6)
- Yellow/Black striped outer cover material
- 4-wire intrinsically-safe control panel (FSIS-25-4)
- Yellow XR-5 chemically resistant cover for

protection against:

- diesel fuel
- JP-4 jet fuel
- 50% hydrochloric acid
- 50% acetic acid
- salt water
- SAE-30 oil





# ***Custom Hangar Door Edges***

---

# **HANGAR DOOR SPECIFICATIONS**

USACE / NAVFAC / AFCEA

## **UNIFIED FACILITIES GUIDE SPECIFICATIONS**

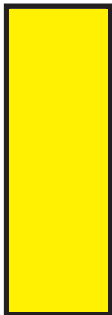
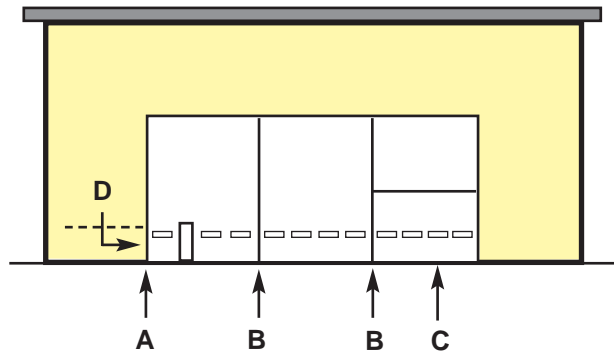
Division 08 - Doors and Windows - SECTION 08342 - STEEL SLIDING HANGAR DOORS

### **SECTION 2.3.6 SAFETY EDGES**

Provide fail-safe safety edges on (each edge of each leaf of individually operated doors) (each leading and trailing edge of drive leaves for floating group doors) (the leading edge of the drive leaf of anchored group doors)

# Illustrated Guide to Hangar Door Specifications

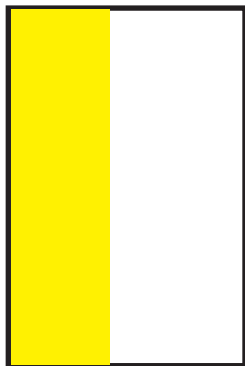
- A- Proper location of a Sensing Edge on each leaf of individually operated doors.  
The edge should be positioned one inch above the floor to the top of the door leaf.
- B- Proper location of a Sensing Edge on the Leading and Trailing edge of drive leaves for floating group doors.  
The edge should be positioned one inch above the door to the top of the door leaf.



**Leaf Cross Section  
(12 inches thick or less)**

For leaves 300mm 12 inches thick or less, provide a single run of sensing edge the full width of the door.

Sensing Edge



**Leaf Cross Section  
(12 inches thick)**

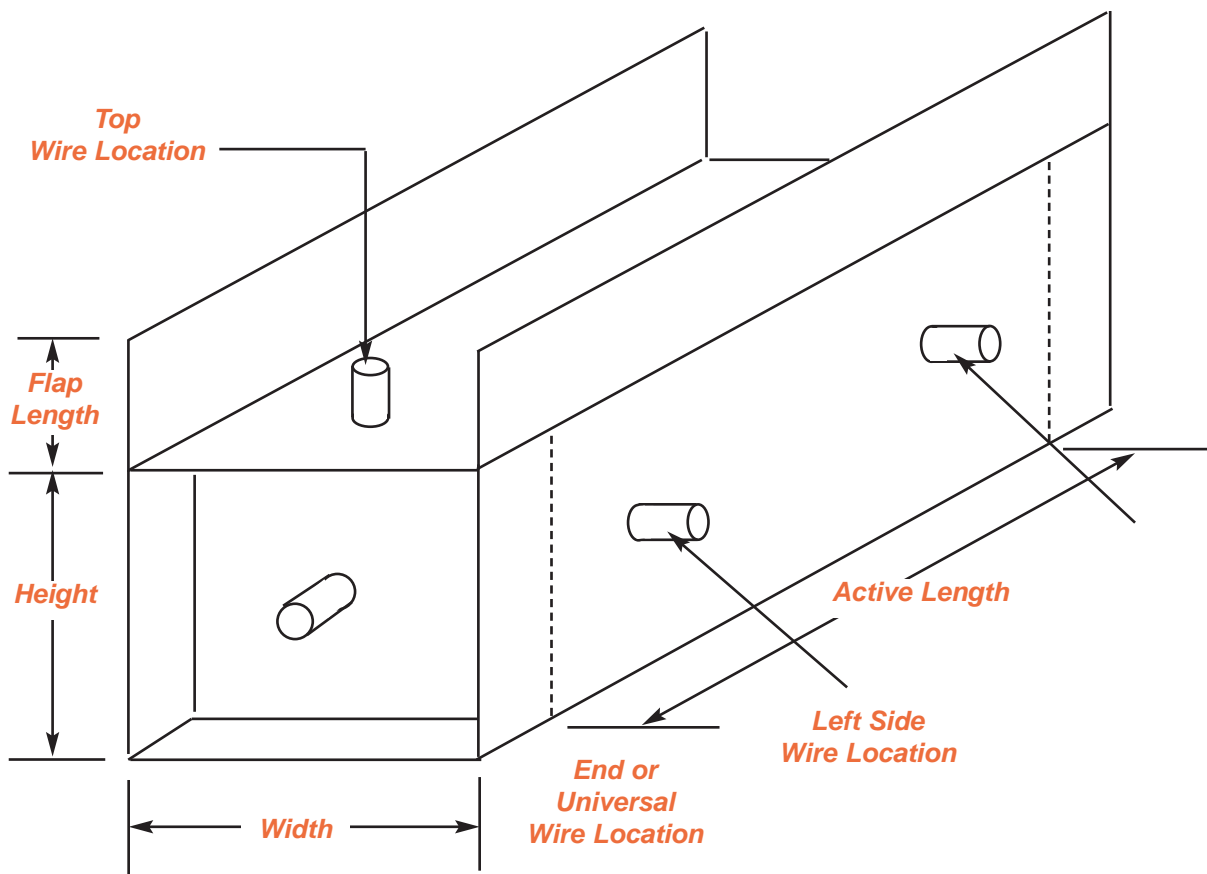
For leaves over 300 mm 12 inches thick (including siding) provide a double run of sensing edges on the outer edge of each side of the door leaf covering no less than 80% of leaf.

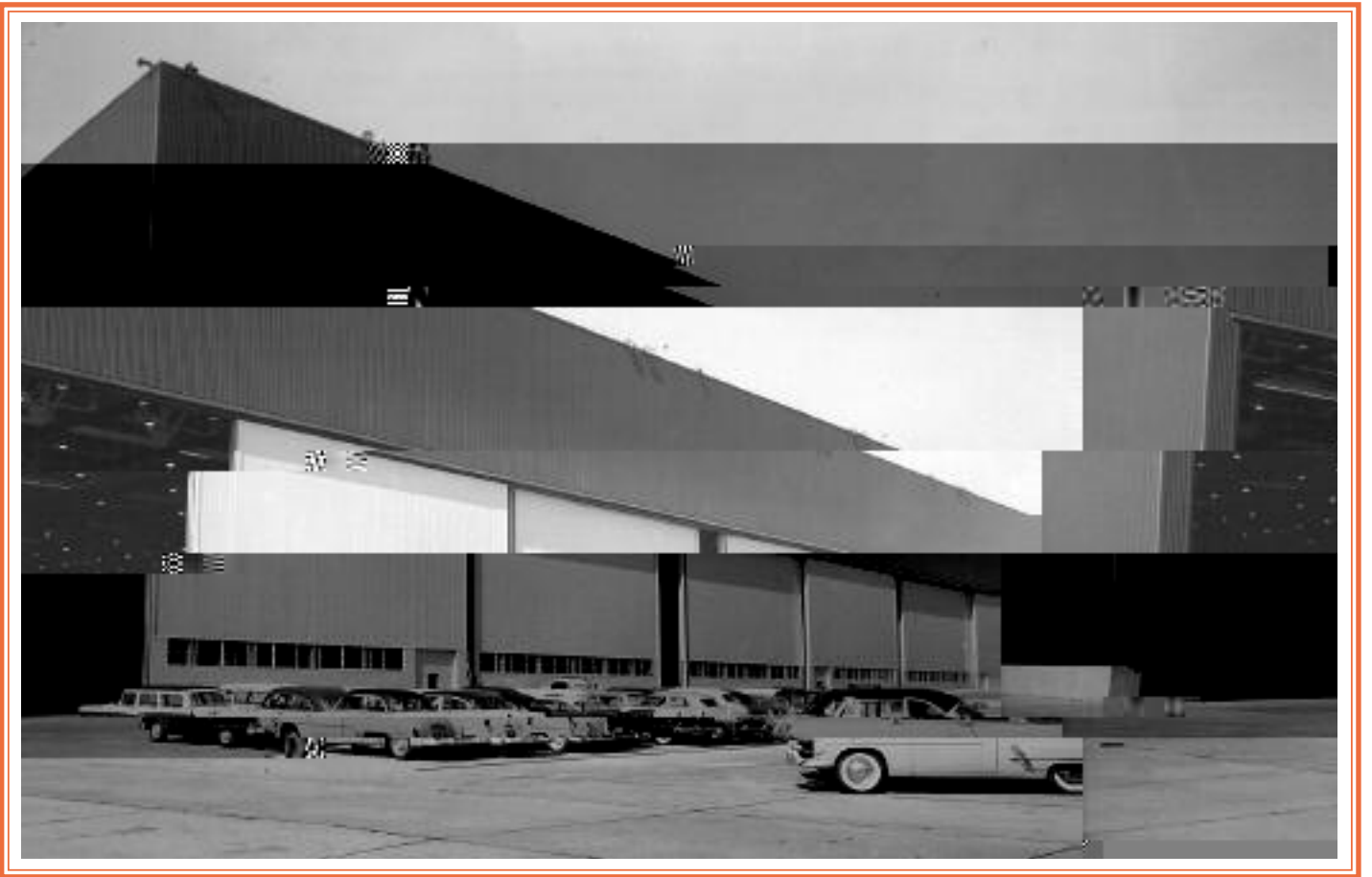
Sensing Edges



# Custom MU Easy Order Form

For ease of quoting your next order, we have provided you with this simple form to fill out. By filling in the the blanks, we will be able to provide you with an accurate quote.





Early Miller Edge Hangar Door Sensing Edge Installation -1957

