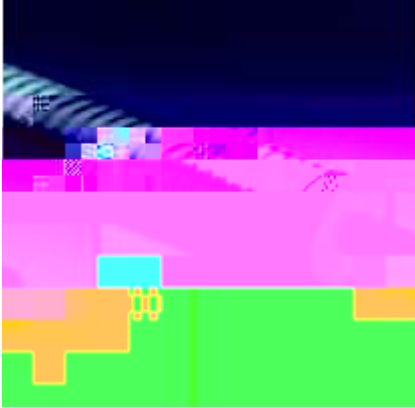


TRICON INSULPEX

The transfer of hot or chilled water through buried pipelines requires a special piping system. TRICON INSULPEX is a pre-insulated piping system that is not only flexible, but also has the ability to withstand harsh conditions.

TRICON INSULPEX consists of RAUPEX® B pipe surrounded by a pre-insulated jacket. The system is designed for long-term service life and is suitable for a wide range of applications. TRICON INSULPEX is a pre-

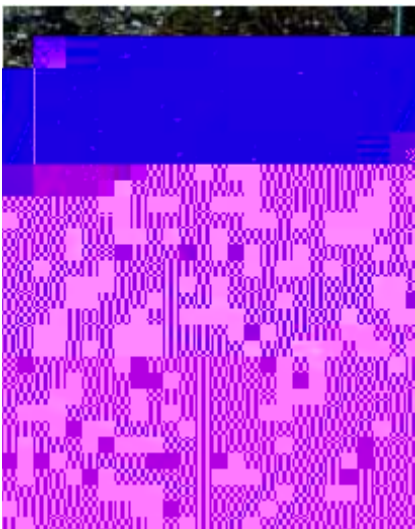
Product Information



TRICON INSULPEX (ONE PIPE)

A single RAUPEX B cross-linked polyethylene (PEXa) pipe with an EVAL oxygen diffusion barrier.

Available in pipe sizes from 25 to 90 mm OD (1" to 3½" nominal).



DUO TRICON INSULPEX (TWO PIPE)

Two RAUPEX B cross-linked polyethylene (PEXa) pipes with an EVAL oxygen barrier. Pipes are insulated from each other.

TRICON DUO INSULPEX combines supply and return pipes in one for faster installation in a smaller trench.

Available in pipe sizes from 25 to 50 mm OD (1" to 2" nominal).

Accessories

- § Heat shrink end caps
- § Rubber wall sealing rings
- § Connection chambers



EVERLOC Fitting System

EVERLOC fittings create connections so reliable they can be buried underground. These fittings allow for minimal reduction in flow because the RAUPEX B pipe is expanded at the joint.

Temperature-Pressure Ratings

- § 120 psi @ 140°F continuous (826 kPa @ 60°C)
- § 90 psi @ 180°F continuous (620 kPa @ 82°C)
- § 80 psi @ 203°F continuous (550 kPa @ 95°C)